

Exclusive Core-Alignment Fusion Splicer

Core Alignment Splicing Method with DACAS (Digital Analysis Core Alignment System)

The Highest Magnification and Resolution

5" Color LCD Touch Screen

Double Tapping (Zoom in & out)

Fast Heating Time

3 Bright LEDs for Dark Environment

Ceramic Clamp for Improved Durability



BELIEVE
YOUR
EYES.

View 6L

Characteristics



Easy to replace electrodes

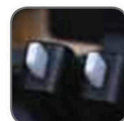


Fast heating up to 13s

3 Bright LEDs for dark environment



Ceramic Clamp - Improved durability



5" Touch Screen with Smart GUI
The Highest 520X magnification
Double Tap to Zoom in & out
Clear Core Image



touch

Description

View 6L, a core-alignment fusion splicer with the world's highest fiber image magnification rate, is the exclusive fusion splicer presented only to main telecommunications operators. View 6L's 5 inch high-resolution color LCD touch screen with user-friendly intuitive GUI (Graphical User Interface) offers large and clear fiber images to users. By double-tapping the screen, users can Zoom In & Out the image to the world's highest magnification of 520x. View 6L offers maximum work efficiency through the fast heating time of 13s. Moreover, the 3 LED lights provide bright splice condition to the users working under dark environments. View 6L offers the most reliable work experiences with the customized solutions for our valuable customers.

Specifications	
Model	View 6L
Dimension	143H x 130W x 155D mm (excluding rubber bumper) / 152H x 147W x 175D mm (including rubber bumper)
Weight	2.43KG (with battery) / 2.07KG (without battery)
Number of Fiber	Single
Applicable Fibers	SM(ITU-T G.652&G.657) / MM(ITU-T G.651) / DS(ITU-T G.653) / NZDS(ITU-T G.655)
Compatible Fiber / Cable	0.25 ~ 3.0 mm
Cleaved Length	Diameter: 0.1 ~ 1 mm / Cleave Length 5 ~ 16 mm
Cladding Diameter	80~150 μ m
Splicing Mode	Max 128 modes
Heating Mode	Max 32 modes
Typical Splice Loss	SM: 0.02dB / MM:0.01dB / DS:0.04dB / NZDS: 0.04dB / G.657: 0.02dB(ITU-T Standard)
Return Loss	>>60dB
Lighting	3 White LEDs
Splicing Time	Quick mode : 7 sec / Auto mode : 9 sec
Estimated Splice Loss	Available
Protection Sleeve Length	20~60 mm
Heating Time	FP-03 typical heating time: 13 sec
Results Storage	The last 10000 results with images
Tension Test	1.96~2.25N
Operating Condition	Operating Altitude: 0~5000m above sea level, 0~95% relative humidity, -10~50°C, Max Wind 15m/s
Storage Condition	0~95% relative humidity, -40~80°C
Display	90° bi-directional view, 5.0" Color High Resolution Display
Fiber View & Magnification	X, Y, XY, X/Y : 520X Magnification
Power Supply	AC Input 100-240V, DC Input 9-14V
No. of Splice / Heating with Battery	5200mAh Battery Capacity, Typical 250 times (Splice+Heat)
Operating Methods	Button / Touch screen
Automatic Calibration	Automatic arc calibration by air pressure and temperature
Electrode Life	5500 arcs, can be extended by using an electrode grinder
Terminal	USB2.0 / MINI USB



Weight and Dimensions



Height: 5.98 inches (152 mm)
 Width: 5.78 inches (147 mm)
 Depth: 6.88 inches (175 mm)
 Weight: 4.56 pounds (2.07 kg without battery)

Detailed View



Package

Standard Package	
Fusion Splicer	View 6L
High Precision Cleaver	V7
Fiber Holder	VFH-10 (equipped)
AC Adapter	JS-180300
Cooling Tray	CG-22
Electrode	E-50
Manual CD	CD
Battery Pack	LBT-52
Power Cable	ACC-25
Cigarette Lighter Cable	CJ-11
Carrying Case	NBX-35

The information on this catalog is subject to change without prior notice.



For more information, kindly scan the QR code.



SPI ENGINEERS PVT. LTD. (INNO Exclusive Distributor for Sale & Service)

506 & 701, SIDDHARTH BUILDING, 96, NEHRU PLACE, NEW DELHI - 110019 (INDIA)

+91-9717088854, 9818988016, 9810157421 marketing@spiengineers.com

www.spiengineers.com

BRANCHES: AHMEDABAD, BANGALORE, BHUBANESHWAR, DELHI, GUWAHATI, HYDERABAD, INDORE, KOLKATA, LUCKNOW, MUMBAI, HONGKONG