

Exclusive Active V-Groove Fusion Splicer

- Active V-Groove Clad Alignment Splicing Method
- The Highest Magnification and Resolution
- 5" Color LCD Touch Screen
- Double Tapping (Zoom in & out)
- Fast Heating Time
- Short Cleave Length Splicing Capability
- Detachable SOC Holder and Heating Oven

VIEW 6C



BELIEVE
YOUR
EYES.

Short V-groove : 5mm cleave length
splicing capability



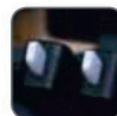
Fast heating up to 13s

3 Bright LEDs for dark environment



Detachable
heat oven for SOC

Ceramic Clamp - Improved durability



Changeable holder for
multi-functional splicing



5" Touch Screen with Smart GUI
The Highest 520X magnification
Double Tap to Zoom in & out

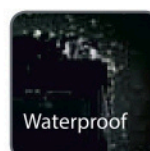


touch

Description

View 6C, an active clad-alignment splicer with the world's highest fiber image magnification rate, is the exclusive fusion splicer presented only to main telecommunications operators. View 6C's 5 inch high-resolution color LCD touch screen with user-friendly intuitive GUI (Graphic User Interface) offers large and clear fiber images to users. By double-tapping the screen, users can Zoom In & Out the image to the world's highest magnification of 520x. View 6C offers maximum work efficiency through the fast heating time of 13s. View 6C brings satisfactory working experience to its users in FTTx field, which is compatible with being widely used fiber-optic cables, and short v-groove length makes the splicer capable of splicing 5mm cleave length suitable for splice-on connector. Moreover, the 3 LED lights provide bright splice condition to the users working under dark environments. View 6C offers the most reliable work experiences with the customized solutions for our valuable customers.

Specifications	
Model	View 6C
Dimension	143H x 130W x 155D mm (excluding rubber bumper) / 152H x 147W x 175D mm (including rubber bumper)
Weight	2.31KG (with battery) / 1.95KG (without battery)
Number of Fiber	Single
Applicable Fibers	SM(ITU-T G.652&G.657) / MM(ITU-T G.651) / DS(ITU-T G.653) / NZDS(ITU-T G.655)
Compatible Fiber / Cable	0.25~3.0 mm / Indoor Cable
Cleaved Length	Diameter: 0.125 ~ 1 mm / Cleave Length 5 ~ 16 mm
Cladding Diameter	80~150 μ m
Splicing Mode	Max 128 modes
Heating Mode	Max 32 modes
Typical Splice Loss	SM: 0.03dB / MM: 0.02dB / DS: 0.05dB / NZDS: 0.05dB / G.657: 0.03dB (ITU-T Standard)
Return Loss	>>60dB
Lighting	3 White LEDs
Splicing Time	Quick mode : 7 sec / Auto mode : 9 sec
Estimated Splice Loss	Available
Protection Sleeve Length	20~60 mm
Heating Time	FP-03 typical heating time: 13 sec
Results Storage	The last 10000 results with images
Tension Test	1.96~2.25N
Operating Condition	Operating Altitude: 0~5000m above sea level, 0~95% relative humidity, -10~50°C, Max Wind 15m/s
Storage Condition	0~95% relative humidity, -40~80°C
Display	90° bi-directional view, 5.0" Color High Resolution Display
Fiber View & Magnification	X, Y, XY, X/Y : 520X Magnification
Power Supply	AC Input 100-240V, DC Input 9-14V
No. of Splice / Heating with Battery	5200mAh Battery Capacity, Typical 250 times (Splice+Heat)
Operating Methods	Button / Touch screen
Automatic Calibration	Automatic arc calibration by air pressure and temperature
Electrode Life	5500 arcs, can be extended by using an electrode grinder
Terminal	USB2.0 / MINI USB



Waterproof



Anti Shock



Dustproof

Weight and Dimension



Height: 5.98 inches (152 mm)
 Width: 5.78 inches (147 mm)
 Depth: 6.88 inches (175 mm)
 Weight: 4.29 pounds (1.95 kg without battery)

Detailed View



Package

Standard Package	
Fusion Splicer	View 6C
High Precision Cleaver	V7
Fiber Holder	VFH-40S (equipped) / FH-SOC-3.0
SOC Heater Cover	HT-SOC
AC Adapter	JS-180300
Cooling Tray	CG-22
Electrode	E-50
Manual CD	CD
Battery Pack	LBT-52
Power Cable	ACC-25
Cigarette Lighter Cable	CJ-11
Carrying Case	NBX-35

The information on this catalog is subject to change without prior notice.



For more information, kindly scan the QR code



SPI ENGINEERS PVT. LTD. (INNO Exclusive Distributor for Sale & Service)

506 & 701, SIDDHARTH BUILDING, 96, NEHRU PLACE, NEW DELHI - 110019 (INDIA)



+91-9717088854, 9818988016, 9810157421



marketing@spiengineers.com



www.spiengineers.com

BRANCHES: AHMEDABAD, BANGALORE, BHUBANESWAR, DELHI, GUWAHATI, HYDERABAD, INDORE, KOLKATA, LUCKNOW, MUMBAI, HONGKONG